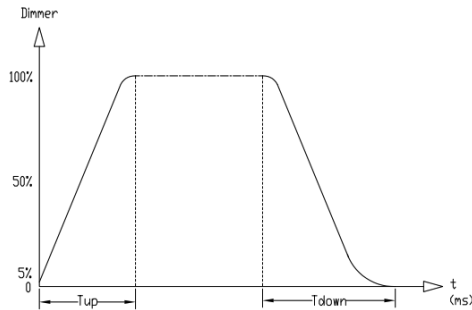


Dimmer Curves:



Ramp Effect	Menu	Tup(ms)	Tdown(ms)
Standard Dimmer Curve	dr-0	0	0
Dimmer Curve1	dr-1	980	1010
Dimmer Curve2	dr-2	1210	1320
Dimmer Curve3	dr-3	1600	1710
Dimmer Curve4	dr-4	1850	1980

Specification

Voltage AC110V-240V
 Frequency 50/60Hz
 Machine Power 25W
 Led Source: 6x4W RGBW 4IN1
 Lithium Battery Capacity 4.4AH Recharge 3.5H for full charged 4H for full color single color for 15H
 Maximum Ambient Temperature 40°
 Beam Angle: 25°
 Strobe: 0~20Hz
 Dimmer:1 standard +4 kinds of dimmer methods
 Channel: 11/6CH switchable
 Built-In Program: 5 kinds strobe, 6 kinds auto run, 2 kinds sound active
 Control Mode DMX512/Manual/Master-Slave/Sound active/IR Remote Control
 Cooling way: no fan, naturally aluminum cooling
 Noise: silent
 Power Mode: select half power under high temperature, half power,full power through menu.
 Real Time Monitoring: The menu will display the battery percentage, the battery qty, the led source temperature.
 Display: LED Display+Four Button
 DMX: 3-pin XLR, male for input, female for output, with ONE USB wireless DMX connector.
 Power Connect: PowerCON(Blue color for input +White color for output)
 POWER INDICATOR WITH ONE TURN ON RED DURING CHARGING, TURN ON GREEN WHEN FULL CHARGE.
 IP: IP20
 Net weight: 2.2kg



PAR LED 6x4W BATT

USER MANUAL

This manual contains important information.
 Please read before operating fixture.

Unpacking

1pc Fixture
1pc User Manual

Thanks for choosing our LED battery par light. Carefully unpack the box and check the contents to ensure that all parts are present and in good conditions. If anything damaged in transit, notify the shipper immediately and keep the packing material for inspection. Again, please save the carton and all packing materials. If a fixture must be returned to manufacturer, it is important that the fixture be returned in the original manufacturer box and packing.

Safety Instruction

Please conserve this manual as operation guidance. If you sell this product to other user, please make sure that they also receive this user manual.

Always make sure that you are connecting to the proper voltage and that the line voltage you are connecting to is not higher than that stated on the decal or rear panel of the fixture.

If the fixture is intended to indoor use only. To prevent risk of fire or shock, do not expose fixture to rain or moisture. Make sure there are no flammable, explosive or corrosive materials surrounded in 10 meters while operating.

The unit must be installed in a location with adequate ventilation, at least 5m away from adjacent surfaces. Be sure that no ventilation slots are blocked.

Some fixture may carry high heat, do not aim at objective more than 2 minutes.

Safe rope should be used to install machine. Bearing of safe rope should be more than 3 times of the machine weight. Complimentary signal cable transmits signals to 20 unit fixtures at most. Signal amplifier is a must to connect more fixtures. And a terminal should be added at the end of last fixtures' DMX sockets, 120 Ohm, 1/4W resistance need welding between Pin 2 and Pin3.

Always disconnect from the power source before servicing or replacing fuse/lamp and be sure to replace with same fuse/lamp size and type. Cut off power before moving, repairing and cleaning the machine.

To avoid electric shock, all fixtures must be connected to circuits with a suitable earth connection.

Always secure fixture using a safety chain and carrying handles.

Do not operate at ambient temperatures higher than 104F(40°).

The power cable for this fixture is 0.75 please mind the safety requirements in actual using, if any wrong operation, our company takes no responsibility for any loss. Also, make sure the power cord is never crimped or damaged.

In case of failure or mis-function occurred, stop using immediately. Never try to repair the fixture by yourself. Repairs carried out by unskilled people can lead to damage or mal-function. Please contact the nearest authorized technical assistance center. Buy the same spare parts/components from manufacturer directly.

Avoid direct eye exposure to the light source while it is on.

CH6	Strobe	0-5 N/A 6-55 random strobe 56-105 pulsed strobe 106-155 equal strobe 156-205 thunder strobe 206-255 standard strobe
CH7	Color Mix	0-1 N/A 2-43 red from dark to bright 44-85 red from bright to dark green from dark to bright 86-127 green from bright to dark blue from dark to bright 128-169 red from dark to bright blue full color 170-211 red full color green from dark to bright blue full color 212-254 R,G,B full color white from dark to bright 255 R,G,B,W full color
CH8	Color preset	0-5 N/A 6-15 Red 16-25 Green 26-35: Blue 36-45 Lime Green 46-55 Yellow Green 56-65 Yellow 66-75 Congo Red 76-85 Light Orange 86-95 Wine Red 96-105 Pink 106-115 Pink Purple 116-125 Light Purple 126-135 Pink Blue 136-145 Light Blue 146-155 Sky Blue 156-165 Light Cyan 166-175 Light Blue 176-185 Water Green 186-195 Light Green 196-205 Cold White 206-215 Light Cold White 216-225 Pure White 226-235 Purple White 236-245 Cream White 246-255 Warm White
CH9	Auto R/Sound Active	0-10 N/A 11-40 7 color fade 41-70 R,G,B fade 71-100 R,G,B color fade with temperature down 101-130 7 color jump 131-160 R,G,B jump 161-190 Yellow,Cyan,Purple jump 191-220 Sound active strobe 221-255 Sound active jump
CH10	Auto speed	0-255 Auto speed & sound active, from slow to fast.
CH11	Dimmer	0-20 Standard Dimmer Curve 21-40 Dimmer Curve 1 41-60 Dimmer Curve2 61-80 Dimmer Curve3 81-100 Dimmer Curve4 101-255 N/A

DMX512 Channel Chart (6CH)

No.	Function	Description
CH1	Dimmer	0-255 R G B W linear dimmer from dark to bright.
CH2	R Dimmer	0-255 Red linear dimmer, from dark to bright.
CH3	G Dimmer	0-255 Green linear dimmer,from dark to bright.
CH4	B Dimmer	0-255 Blue linear dimmer,from dark to bright.
CH5	W Dimmer	0-255 White linear dimmer,from dark to bright.
CH6	Strobe	0-5: N/A, 6-55: Random Strobe,56-105: Pulse Strobe, 106-155: Average Strobe, 156-205:Thunder Strobe,206-255: Standard Strobe

Control Menu

No.	Menu	Function Press ENTER
1	d11-	DMX 11 channel control(need connecting controller)
2	d.6--	DMX 6 channel control(need connecting controller)
3	r---	r000 to r255: Red from dark to bright
4	g---	g000 to g255 Green from dark to bright
5	b---	b000 to b255 Blue from dark to bright
6	n---	n000 to n255 White from dark to bright
7	pr--	pr01 to pr25 25 kinds preset color pr0 Red, pr02 Green, pr03 Blue, pr04 Lime Green pr05 Yellow Green, pr06 Yellow pr07 Congo Red pr08 light orange, pr09 Wine Red pr10 Pink pr11 Pink Purple pr12 Light Purple pr13 Pink Blue pr14:Light Blue pr15 Sky Blue pr16 Light Cyan pr17 Cyan Green pr18 Water Green pr19 Light Green pr20 Cold White pr21 Light Cold White pr22 Pure White pr23 Purple White pr24 Cream White pr25 Warm White
8	F---	F000 to F255 Strobe speed,from slow to fast(strobe color is determined by the menu of r--- g--- b--- n---)
9	C---	C000 to C255 7color fade,from slow to fast
10	J---	J000 to J255 7color jump ,from slow to fast
11	S---	S000 to S255 Sound active speed, from slow to fast
12	IR---	IRon infrared remote control On, IRof infrared remote control off
13	dr--	dr-0 Standard Dimmer Curve dr-1 Dimmer Curve1 dr-2 Dimmer Curve2 dr-3 Dimmer Curve3 dr-4 Dimmer Curve4
14	TL--	TL-0 half power under high temperature,when the temperate of the led source hit 75°, the max power will reduce to be 50%;when the temperature decrease to be 65°, the max power will recover to be 100%. TL-1: half power; TL-2: Full power.

DMX protocol

DMX512 Channel Chart (11CH)

No.	Function	Description
CH1	Dimmer	0-255 R G B W linear dimmer from dark to bright.
CH2	R Dimmer	0-255 Red linear dimmer, from dark to bright.
CH3	G Dimmer	0-255 Green linear dimmer,from dark to bright.
CH4	B Dimmer	0-255 Blue linear dimmer,from dark to bright.
CH5	W Dimmer	0-255 White linear dimmer,from dark to bright.

Do not power on and power off the fixture frequently
When use DMX controller, please make sure that there is no interference sources(e.g. intercom, high frequency radio waves and radiation source)

Caution! There are no user serviceable parts inside the unit. Do not open the housing or attempt any repairs yourself. In the unlikely event your unit may require service, please contact your local distribution or after-sale service center.



Zgodnie z przepisami ustawy z dnia 1 lipca 2005 roku o zużytych sprzęcie elektrycznym i elektronicznym, zabronione jest umieszczanie go łącznie z innymi odpadami. Użytkownik, który zamierza pozbyć się tego produktu, jest zobowiązany do oddania zużytego sprzętu elektrycznego i elektronicznego do punktu zbierania zużytego sprzętu. Punkty zbierania prowadzone są m.in. przez sprzedawców hurtowych i detalicznych tego sprzętu oraz przez gminne jednostki organizacyjne prowadzące działalność w zakresie odbierania odpadów. Powyższe obowiązki ustawowe wprowadzone zostały w celu ograniczenia ilości odpadów powstałych ze zużytego sprzętu elektrycznego i elektronicznego oraz zapewnienia odpowiedniego poziomu zbierania, odzysku i recyklingu zużytego sprzętu. Prawidłowa realizacja tych obowiązków ma znaczenie zwłaszcza w przypadku gdy w zużytym sprzęcie znajdują się składniki niebezpieczne, które mają szczególnie negatywny wpływ na środowisko i zdrowie ludzi.



Co to jest RoHS?

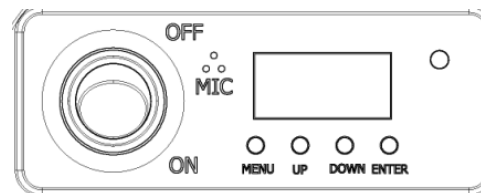
RoHS (restriction of use of certain Hazardous Substances In Electrical and Electronic Equipment/ Ograniczenie stosowania niektórych niebezpiecznych substancji w sprzęcie elektrycznym i elektronicznym) jest Dyrektywą Unii Europejskiej, która ogranicza 6 niebezpiecznych materiałów w produkcji różnego typu elektronicznych i elektrycznych urządzeń.

Installation

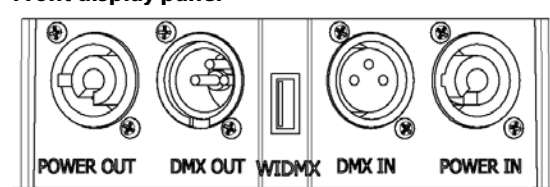
This machine should be mounted through the screw holes of truss. Safety rope is a must to fix fixture well. Make sure truss and safety rope have strong load capacity to bear more than 3 times of machine weight.

This machine should be installed by qualified technician.

Controlling Board



Front display panel



LED Display Panel

Button

Menu	Switch menu function
UP	Scroll upwards
DOWN	Scroll downwards
ENTER	Confirm by pressing ENTER

2.1 Press MENU will display 14 kinds different menu. Press ENTER for confirmation.Press UP or DOWN to revise the DMX value. Press ENTER for save current value, Press MENU 5 seconds, will display the battery percentage Press ENTER 5 seconds, will display the temperature.

2.2 Infrared remote control operation when operate this infrared remote control, should towards the receiving signal head(the valid distance is within 5 meter),Press the relative button please pull off the parting slip of the battery before using

2.2.1 OFF

UP	DOWN	OFF	FULL ON
RED	GREEN	BLUE	WHITE
Orange	Light Green	Light Blue	Strobe
Brown Yellow	Cyan Green	Violet	Jump
almond	Water Green	Plum	Fade
Yellow	Cyan	Light Purple	Sound Active



2.2.1 OFF belongs to d---menu Connect control signal or under master-slave,press OFF will return menu d,other button no function.

2.2.2 Under the function of color,UP&DOWN button for adjusting the brightness, under strobe, jump,fade function, UP&DOWN button for speed, under sound active, UP&DOWN button for sensitive,under OFF, UP&DOWN adjust the address code.

3. DMX Signal Input

3 PIN XRL port for DMX512 signal input (daisy chain);

4. DMX signal output

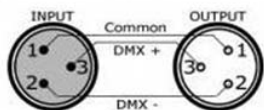
3 PINXRL Port for DMX512 signal output (daisy chain);

5. Power Input/output

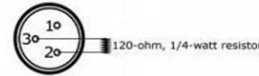
AC power cable port input/output

Cable Connectors

Cables must have a male XLR connector on one end and a female XLR connector on the other end.



A word on termination: DMX is a resilient communication protocol, however errors still occasionally occur. Termination reduces signal errors, and therefore best practices include use of a terminator in all circumstances. If you are experiencing problems with erratic fixture behavior, especially over long signal cable runs, a terminator may help improve performance.



To build your own DMX Terminator: Obtain a 120-ohm, 1/4-watt resistor, and wire it between pins 2&3 of the last fixture. They are also readily available from specialty retailers.

Master and slave: select one machine as master, press the menu to choose the function you want. Press other machines' address to be DMX state. Use signal cable to connect machines one by one. Then slave machines will run the same as master machine.

Use controller to control lot of machines: if all machines are set the same menu data, or different manual data, after use signal cable to connect to controller, all machines will be controlled by controller. (before connect to controller, all machines should be in the same channel mode 11CH or 6CH).

Section 3. Troubleshooting

Problem	Probable Cause(s)	Remedy
No response from fixture when power is applies	No power to fixture	Check power cables
	Primary fuse blown	Replace fuse
	Secondary fuse blown	Replace fuse
Fixture resets but does not respond correctly to controller(DMX mode operation)	Controller not connected	Connect controller
	Incorrect addressing of the fixtures	Check address setting on fixture and controller
	Bad data link connection	Inspect cables and correct poor connections and/or broken cables.
	Conflict between tracking and vector control	Eliminate scene cross-fade on controller
	Data link not terminated	Insert termination plug in output of last fixture
	Defective fixture or 2 devices transmitting on link	Bypass fixtures one at a time until normal operation is regained: unplug both connectors and connect them directly together
Colors cannot be mixed	Random color mixing is on	Turn off random color mixing
Fixture does not reset correctly	Electronic or mechanical failure	Contact service technician
No light, lamp cuts out intermittently, or burns out too quickly	Lamp missing or blown	Disconnect fixture and replace lamp
	Fixture or lamp is too hot	Allow fixture to cool. If problem persists,contact service technician